



SprayVerse

Spray Painting Simulator

Get SprayVerse And Attract the Next Generation of Spray Painters

www.sprayverse.com

SprayVerse

VR Spray Painting Simulator

Working with industry leaders, we have developed the first Standalone Virtual Spray Painting Training Simulator for use in classrooms, training centers, and exhibitions. The one-of-a-kind solution using the latest in hardware and software products from global brands such as Meta and Google providing the highest level of realism and best possible user experience and engagement. As a standalone VR application, SprayVerse does not require expensive high-performance PCs connected to the VR headsets to run – making it the most affordable VR Spray-Painting training solution on the market.

All-in-One VR Simulator

For organizations providing training in Spray Painting, the All-in-One package is a turnkey system including all needed hardware, software and cloud-based system for user management, progress tracking, analytics and reporting.

Standalone VR App

1 User License for Lifetime. For individuals and organizations equipped with Meta/Oculus Quest VR headsets who want to dive into the immersive Spray-Painting training.



All-in-One VR Spray Painting Simulator

Hardware



Compact Hardcase



The SprayVerse system is housed in a custom-designed and travel-ready hardcase, enabling safe transport and effective training in any location. The case weighs in at just 2.5kg.

Oculus Quest 2



Quest 2 VR headset included. The headset has an ergonomic design to ensure comfort and is equipped with next-generation lenses and sharp displays to deliver an immersive and realistic training session without the requirement of external tracking sensors.

Custom SprayGun



Custom Spray Gun controller mount included to replicate the feel and ergonomics of the industry's leading spray guns. Users will be completely immersed in a realistic training experience enabling the use of their techniques and skills.

Casting Device



Cast the user point of view and interactions within the VR environment to an external monitor wirelessly without affecting the user mobility and freedom of movement.



VR Simulator App Preinstalled

As the first standalone VR Spray-Painting simulator on the market, the VR simulation application is directly installed on the included Meta Quest 2 VR Headset.



Built-In Grading System and Analytics

SprayVerse features sophisticated grading and scoring system based on the real-time tracking of user performance in terms of coat coverage, paint used and time spent. The system is tracking and recording the user's Spraygun movement for each training session for later analyses.



Web Admin Panel

Web-based administration panel to manage users, organization settings, active VR devices and the online shop to purchase additional products, services and VR apps from Cythero.



Cloud Analytics and Reporting

Each SprayVerse All-in-One package includes a 1 Year free access to the cloud web portal for analytics and reporting.

Software

All-in-One
VR Spray Painting Simulator



Single User

SprayVerse Standalone VR App

Software Only



Training and Learning Modes

The SprayVerse standalone VR app has 3 operation modes: Spray Painting Training, Interactive Learning - Lessons and Analytics Preview.



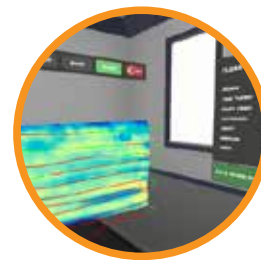
Interactive Learning Lessons

Sprayverse has built-in interactive lessons for learning the basics of Spray Painting. The lessons included are: Spray Painting Techniques, Paint Mixing Tutorial and Paint Blending.



Multiple Industries

Three main industry categories parts are available: Automotive, Aircraft and Construction. Each category has multiple parts such as fender, door and hood for automotive, wing, tail-wing and propeller for aircraft, beam, roof tile and a rail section for construction.



Coverage Heatmaps and Tracking

SprayVerse provides real-time feedback through heatmaps. The active heatmap indicates the coat coverage for each coat and highlights the over- and under-painted areas. Visual feedback helps the user to maintain correct distance during the whole training process. The SprayGun movement during each session is recorded and displayed as tracking lines.

SprayVerse

Modules



Painting where you can choose from a variety of selected parts based on the suited category.



Sandblasting where you can clean rusted parts and strip paint .



Lessons a collection of useful practices that should be known to the spray painter.



Statistics contains all of the data regarding the user, the progress and breakdown for each part.



Session Replay is used to replay the past sessions of the user in order to better reflect on past mistakes.

Painting Categories

Automotive Parts



AUTOMOTIVE

The **Automotive Category** consists of the following parts using HVLP painting technique:



**Front
Bumper**



**Rear
Bumper**



**Sedan
Trunk**



**Side
Mirrors**



Fender



Hood



Door

The **Aircraft Category** consist of the following parts using HVLP painting technique:



Tail Wing



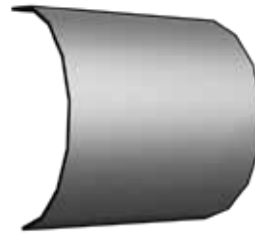
Wing



Propeller



Nose Cone



Fan Cowling



AIRCRAFT

Aircraft Parts

**Painting
Categories**

Painting Categories

Construction Parts



CONSTRUCTION

The **Construction Category** consists of the following parts using Airless painting technique:



Beam



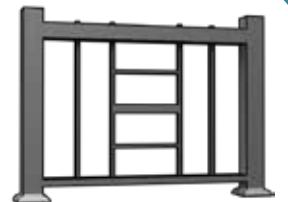
Roof Tile



Larg Pipe



Small Pipe



Rail Section



Equal T



**90 Degree
Elbow**

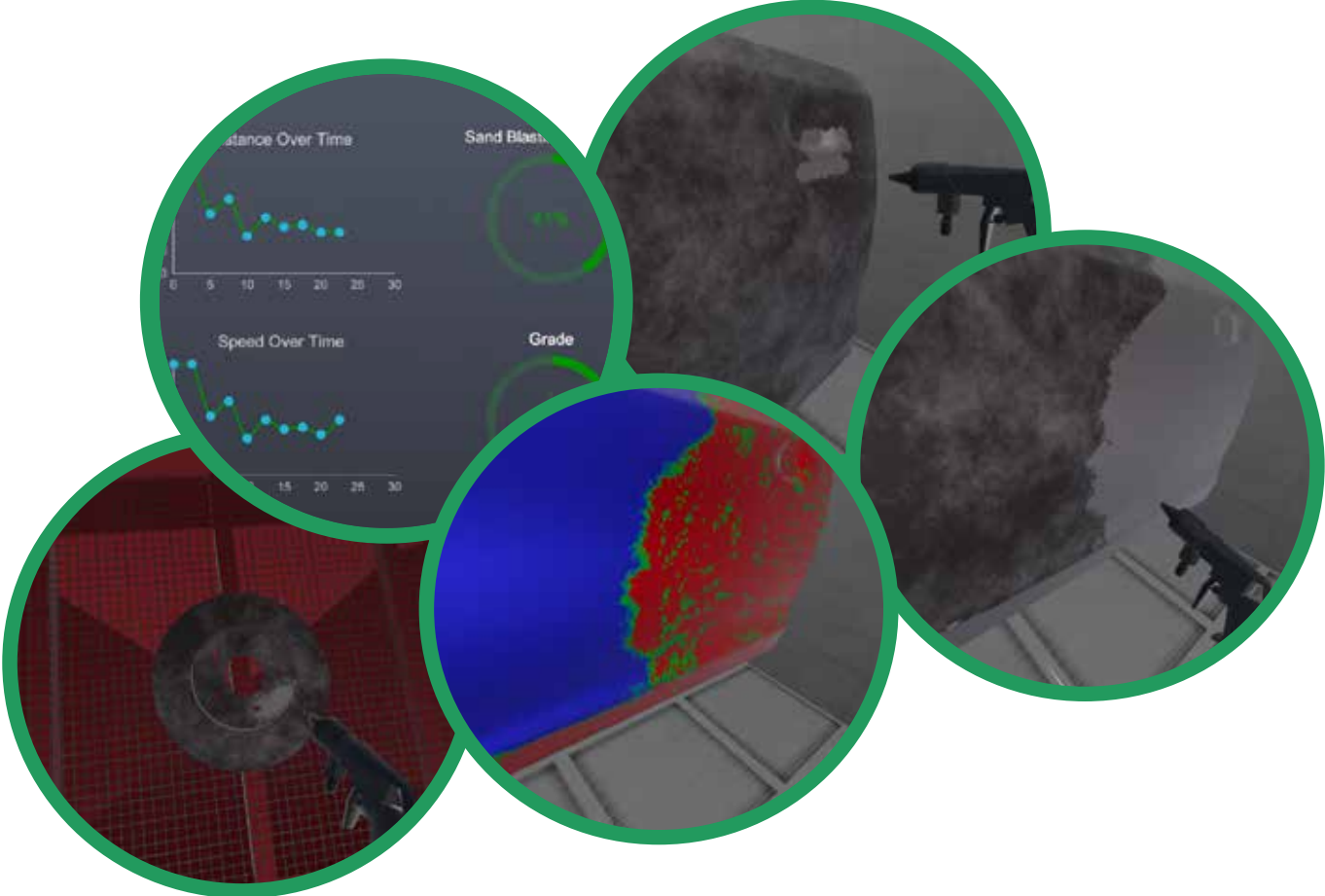
The **Furniture Category** consist of the following parts using Airless painting technique:



Furniture Parts

**Painting
Categories**

In the **Sandblasting Module** you can control the high-pressure stream of abrasive particles to clean and reshape surfaces.



Sandblasting



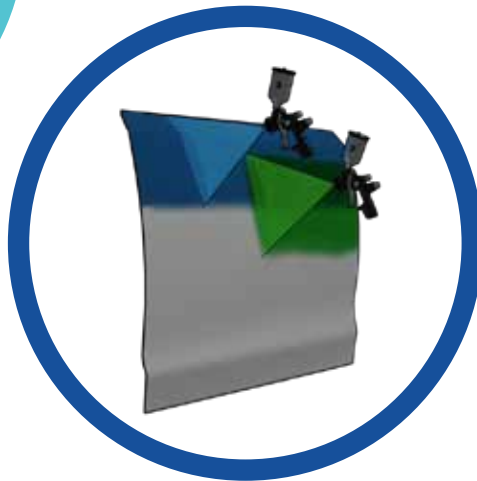
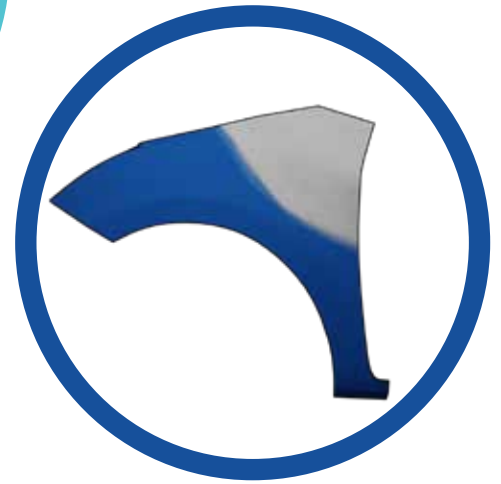
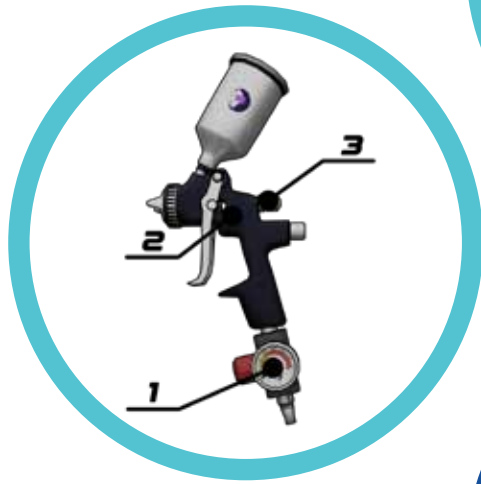
SANDBLASTING

Sandblasting Module

SprayVerse

Lessons

SprayVerse includes a collection of useful practices that should be known to the spray painter.



SprayVerse Lessons

Paint Mixing



Paint Mixing will teach you how to read the cup measurements and how to pour the correct amount of paint.

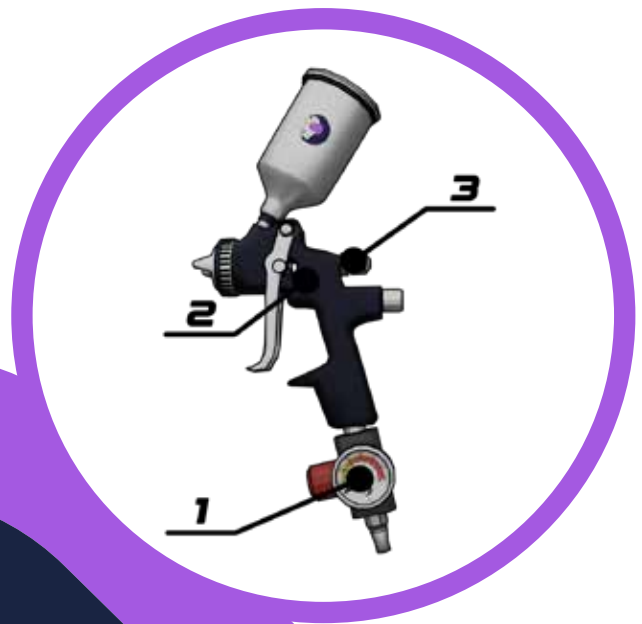


Spray Gun Settings will teach you the function of each knob on the spray gun.

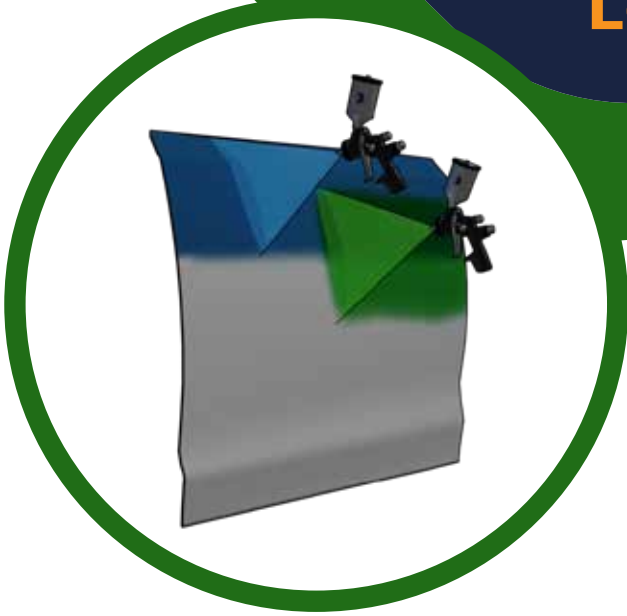


Spray Gun Settings

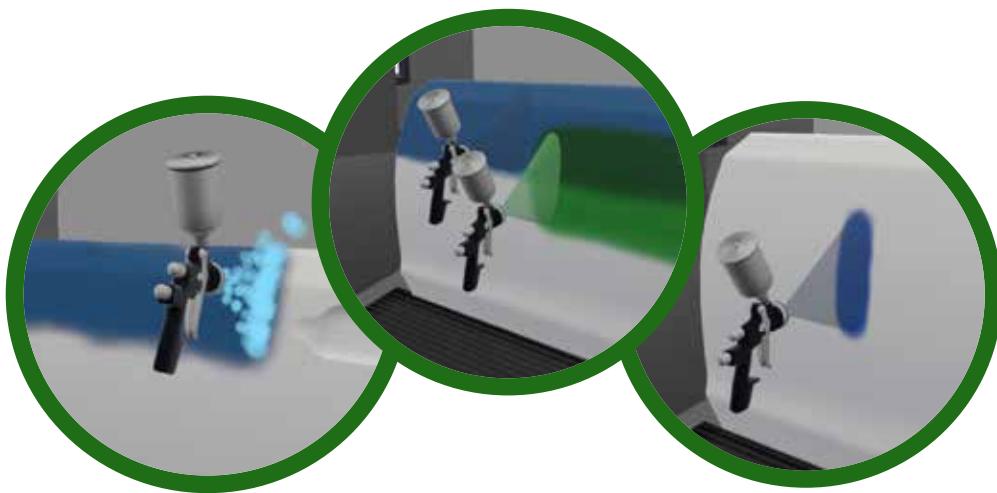
SprayVerse
Lessons



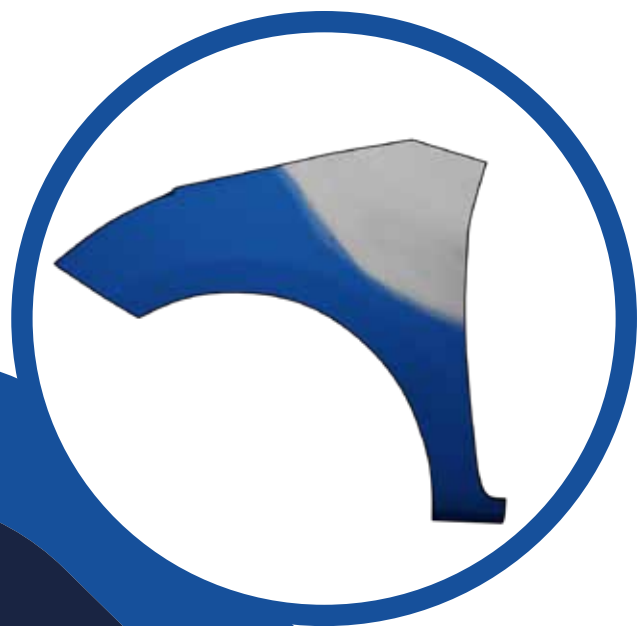
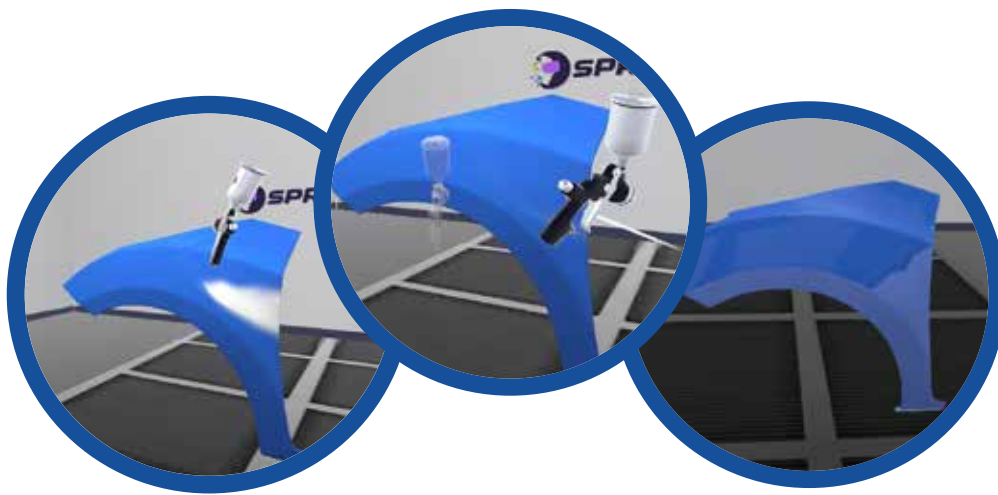
SprayVerse Lessons



Painting Tutorial will teach you the proper Spray Painting Techniques.



Paint Blending will teach you how to blend the repaired area with the existing paint. A virtual trainer will guide you, showing the correct way to apply a break away motion for correct paint blending.



Paint Blending

SprayVerse
Lessons

Training

Paint Process



The user will be asked to apply the **primer coat** to even out a seal, scratches or imperfections and prepare the part for base coat.



During any part of the spray process the player may enable the **heatmap feature** in order to check their coverage in real-time.

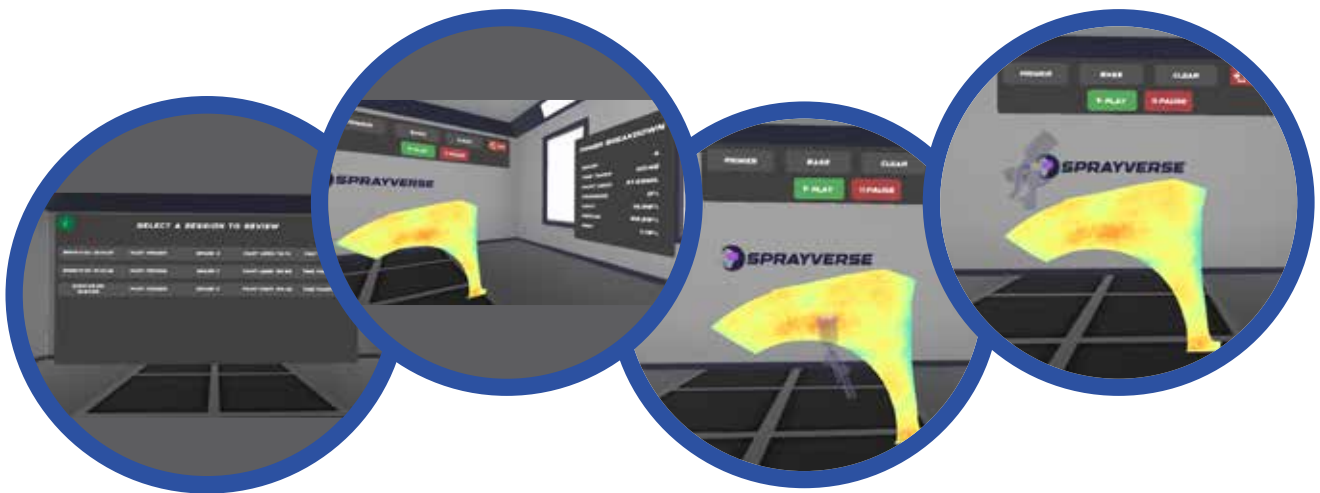


The user may choose one of the given colors to apply to the part.

SprayVerse

Session Browser

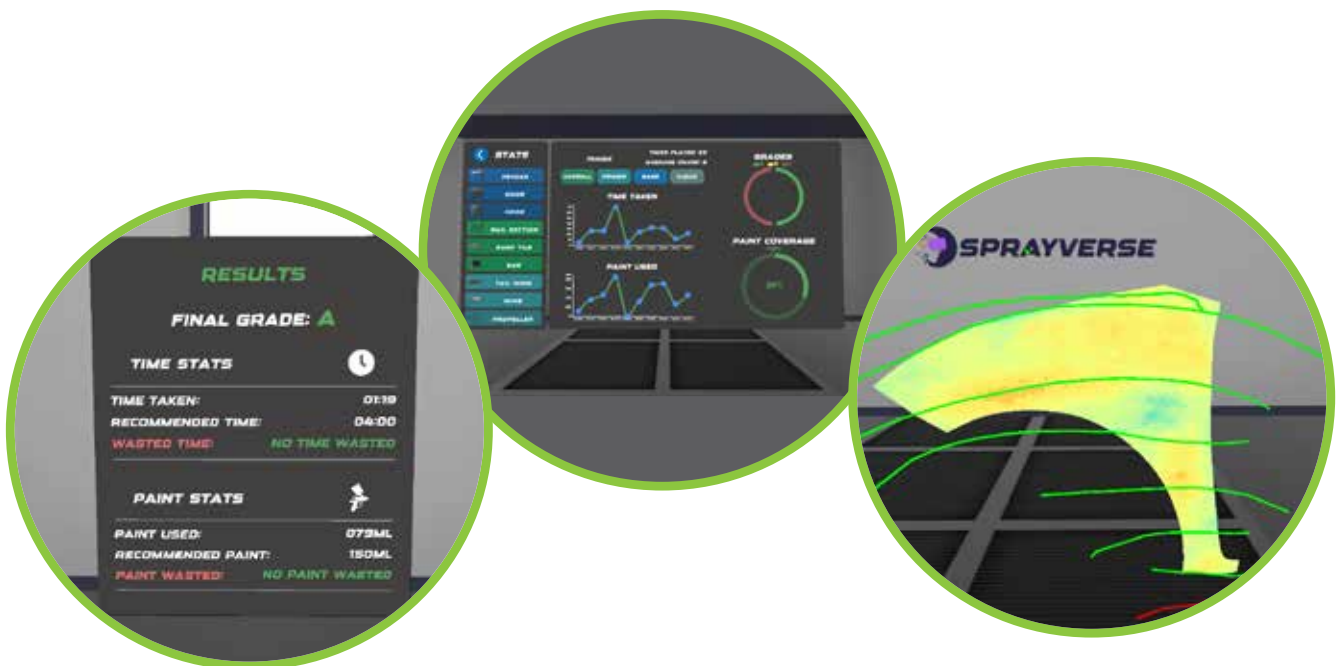
In session browser the player can find all their past sessions. Choosing a session will load a recording of it so that the user can replay their past sessions and review their mistakes.



SprayVerse

Built-In Grading System & Analytics

SprayVerse features sophisticated grading and scoring system based on the real-time tracking of user performance in terms of coat coverage, paint used and time spent. The system is tracking and recording the user's Spraygun movement for each training session for later analysis.



SprayVerse provides real-time feedback through heatmaps. The active heatmap indicates the coat coverage for each coat and highlights the over and under-painted areas. The visual feedback helps the user to maintain a correct distance during the whole training process. The SprayGun movement during each session is recorded and displayed as tracking lines.

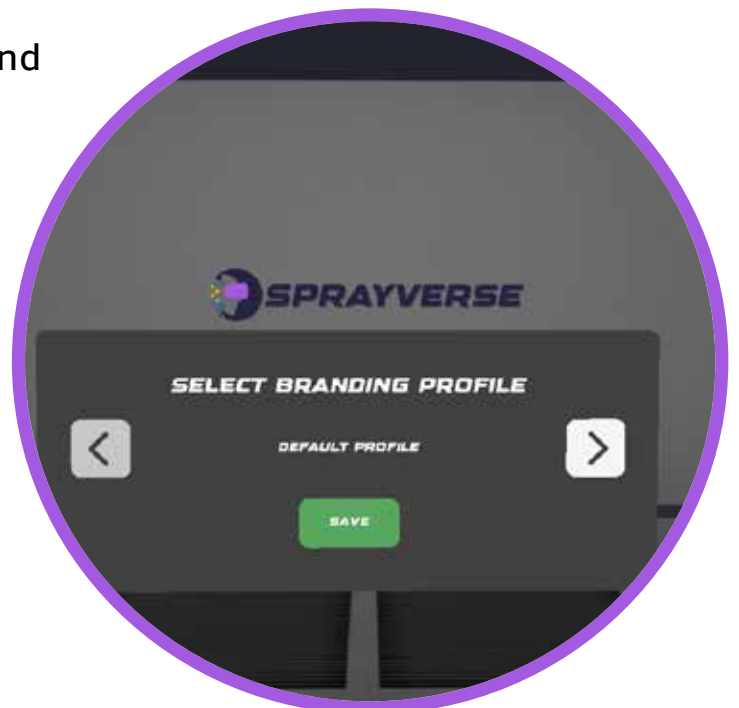
SprayVerse

Branding Option

You can choose a branding profile by selecting the **Customize Button** from the main screen.



With the branding option users can rebrand the VR environment with their corporate identity graphics, logos and banners.



Switching between Versions

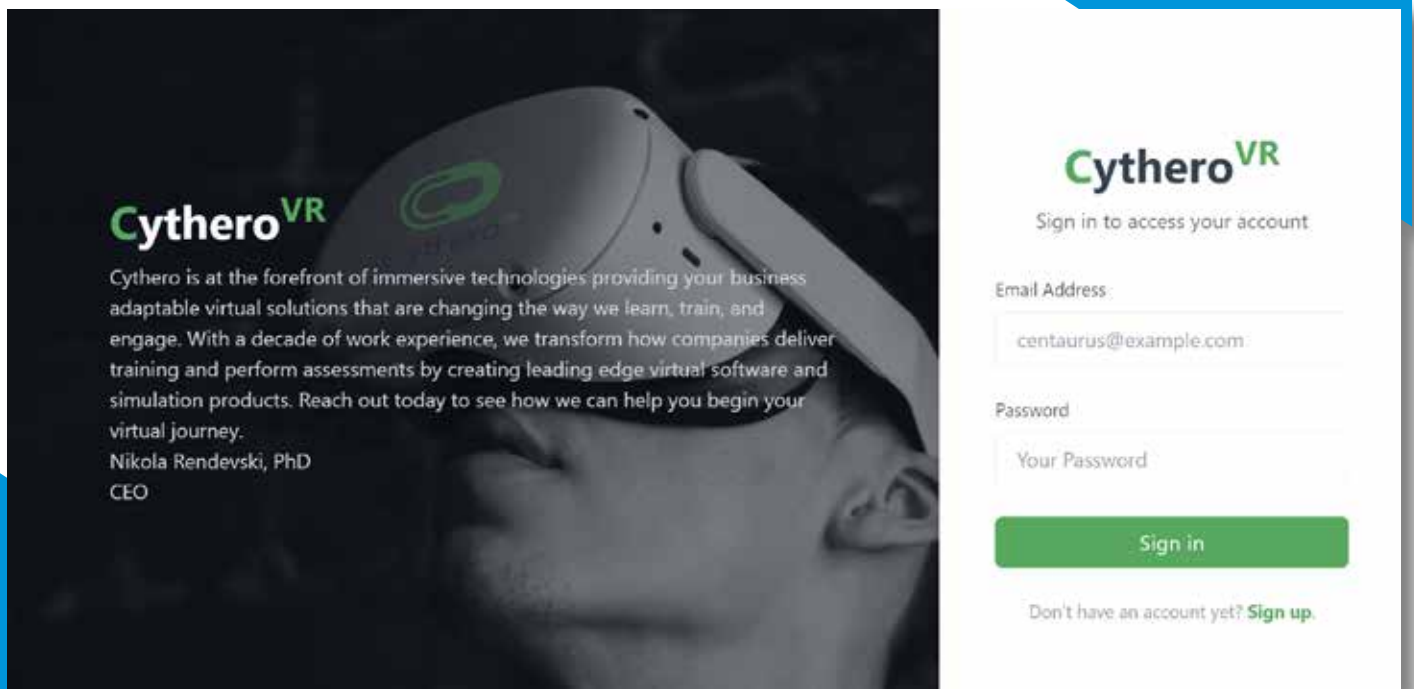
You can use the button on the top right of your screen to switch between the **Standalone Version** and the **Enterprise**.



With the **Enterprise Version** you will be able to log in and create multiple user accounts within the organization and keep track of the individual user progress. Included is our Web-based administration panel to manage users, organization settings, active VR devices and an online shop to purchase additional products, services and VR apps.

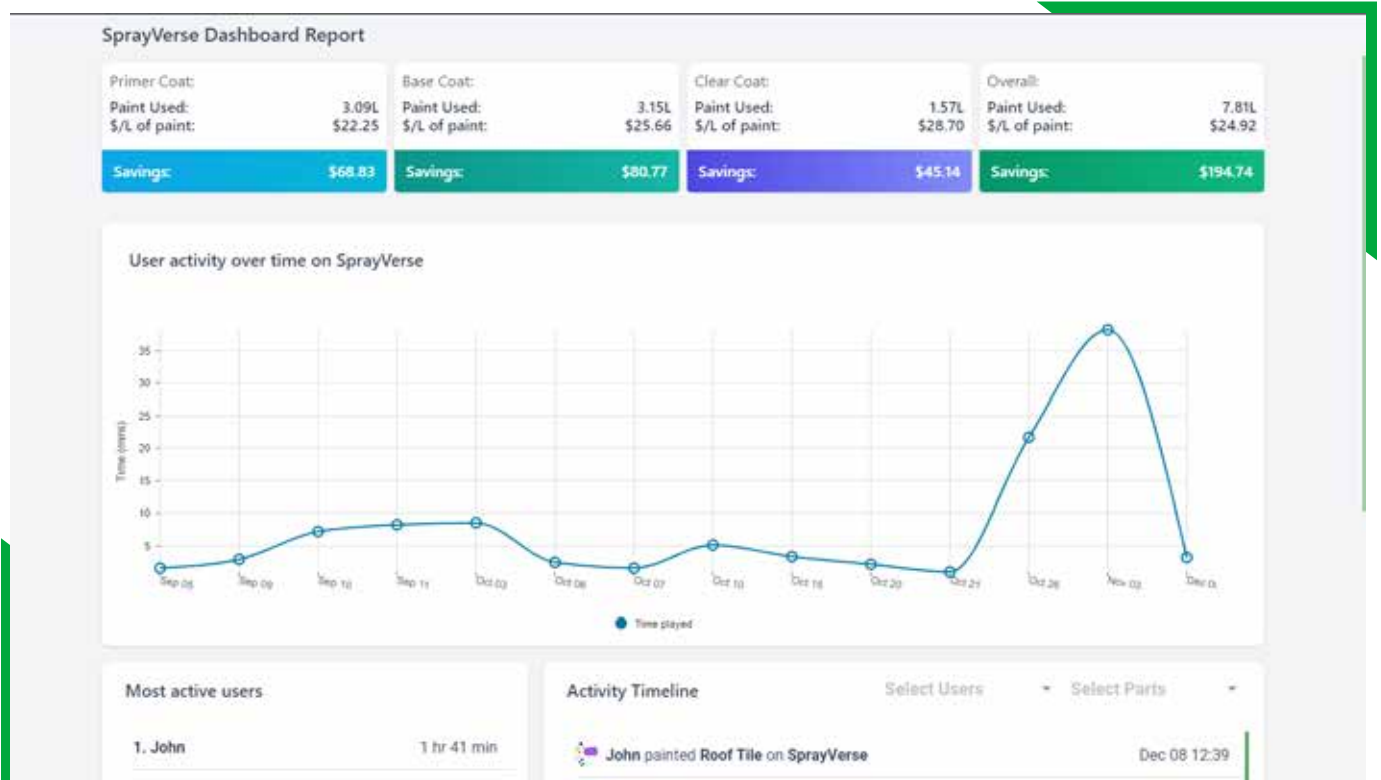
Web-Based Administration Panel

Web-based administration panel to manage users, organization settings, active VR devices and an online shop to purchase additional products, services and VR apps from Cythero.



Cloud Analytics and Reporting

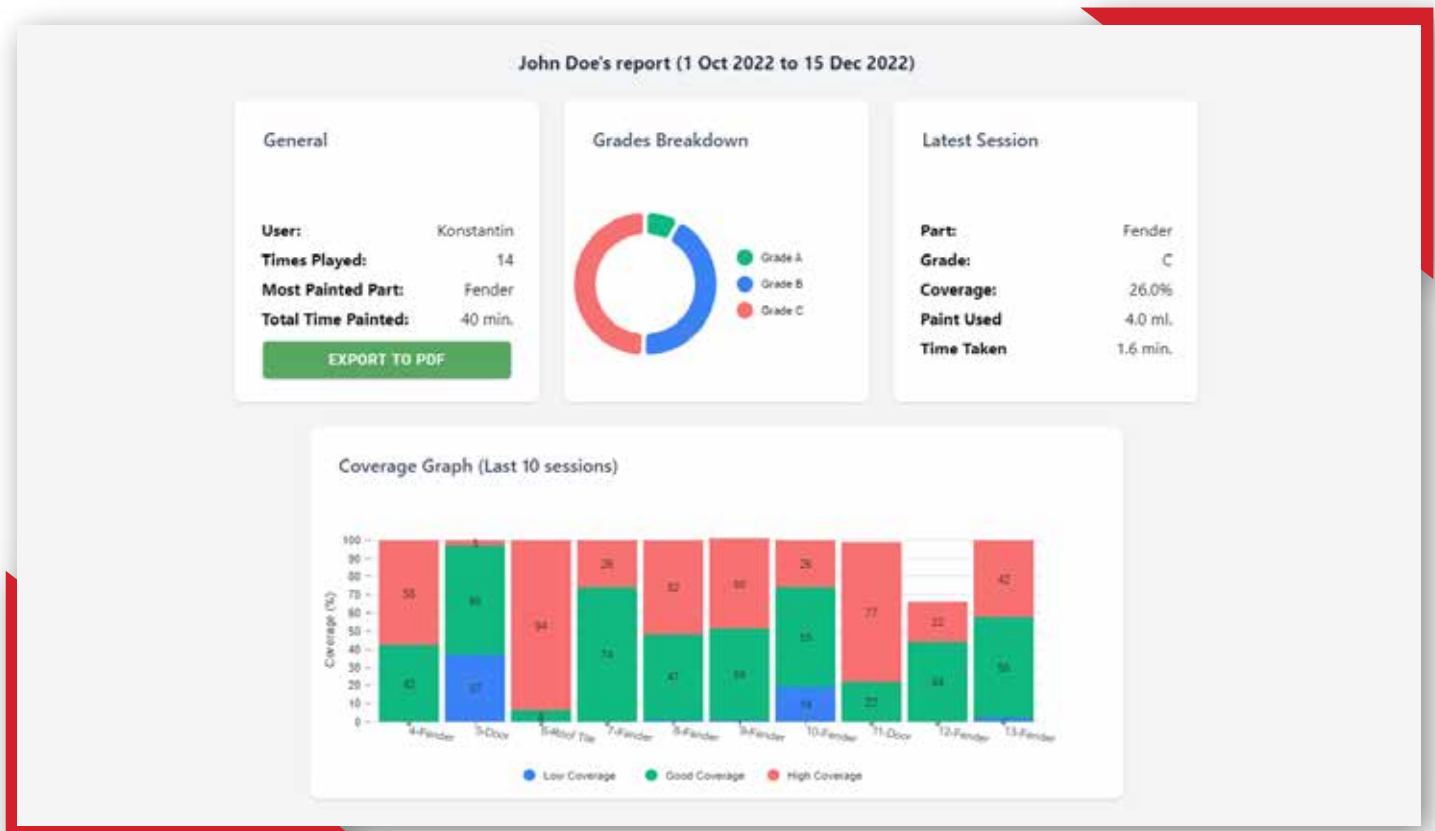
Each SprayVerse All-in-One package includes a 1 Year free access to the cloud web portal for analytics and reporting.



You can choose from the following reports:



The **User Report** represents a recap of the user's progress for the selected period. It displays the total time played, times painted, the grades breakdown, and a coverage graph for their latest sessions.



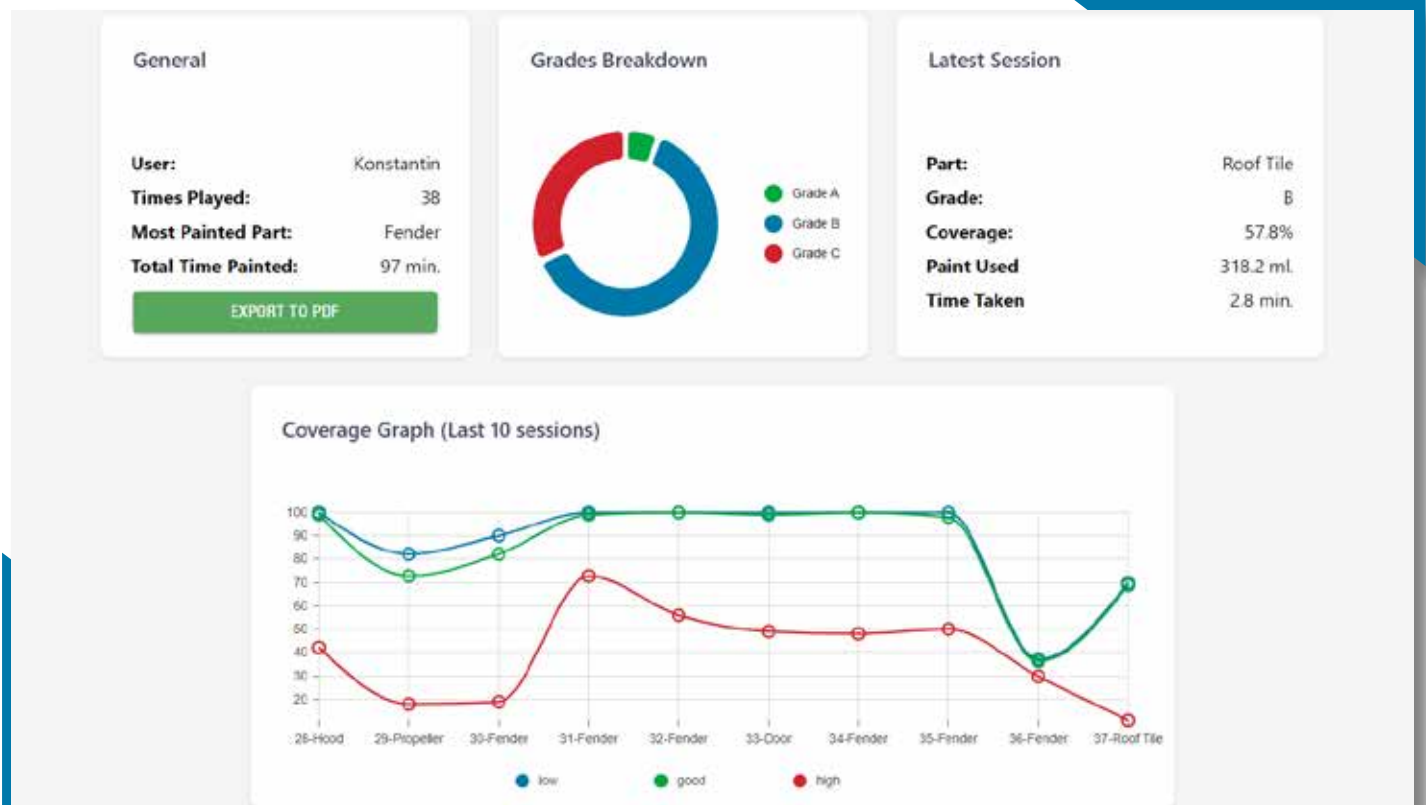
User Report



Part Report



The **Part Report** contains all of the relevant information for the selected part.



The **Usage Report** is a list of each session that has been played by the user and a detailed view for each session.

User	Part	Date	Point Used (Mi)	Total Time Spent (min)
John Doe	Fender	2022-10-03 14:26:55	175.36	1.683
John Doe	Hood	2022-09-20 16:54:58	156.011	2.133
John Doe	Fender	2022-11-08 12:13:07	59.138	0.967
John Doe	Fender	2022-10-03 12:02:55	6.306	1.933
John Doe	Wing	2022-09-26 10:33:59	396.057	3.217
John Doe	Fender	2022-10-03 11:02:47	140.26	1.433
John Doe				1.767
John Doe				2.883
John Doe				1.233
John Doe				1.733

Session Info CLOSE

John Doe's Session Card

Time spent (Seconds)

Color used (Milliliters)

Session information

Primer Time: 34	Primer Paint used: 20.2568
Primer Grade: C	Primer Good Coverage: 12.97463
Primer Low Coverage: 2.739099	Primer High coverage: 18.47733
Base Time: 39	Base Paint used: 81.5476
Base Grade: C	Base Good Coverage: 15.0829
Base Low Coverage: 0.4688847	Base High coverage: 82.15364
Clear Time: 25	Clear Paint used: 32.69103
Clear Grade: A	Clear Good Coverage: 71.93258
Clear Low Coverage: 5.811848	Clear High coverage: 20.59389
Session Start: 2022-09-03 12:54:38	Session End: 2022-09-03 12:56:22
Part Name: Fender	

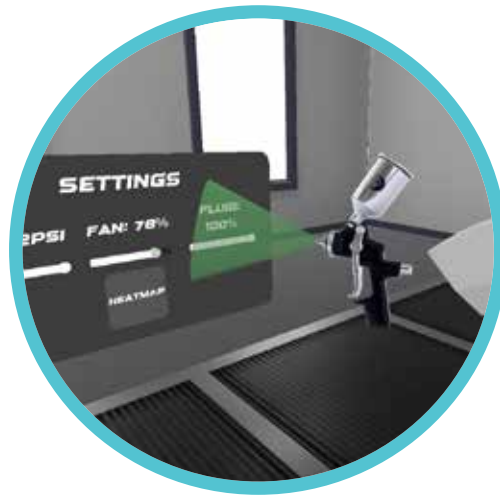
[EXPORT TO PDF](#)



Usage Report

Spray Gun Settings Adjustment

The settings panel allows the user to modify and precisely dial in their spray gun settings before or during a spraying session. The user can modify the airflow, the spray fan and material flow in order to get the perfect spray pattern for the job.



Each modification can be tested on the **Test Sheet** next to the settings panel.



Application Settings

The application settings can be edited in order to better reflect the ROI calculations.

Your Settings:

Application	Setting (type)	Value	Action
SprayVerse	Clear coat \$/liter (number)	<input type="text" value="28.6984"/>	UPDATE
SprayVerse	Base coat \$/liter (number)	<input type="text" value="25.6636"/>	UPDATE
SprayVerse	Primer coat \$/liter (number)	<input type="text" value="22.25"/>	UPDATE
SprayVerse	Target weekly paint time (min) per user (number)	<input type="text" value="600"/>	UPDATE
SprayVerse	Target coverage (%) per session (number)	<input type="text" value="98"/>	UPDATE